



LaunchPADS™

The cost effective turnkey alternative to mission planning

THE LAUNCHPADS™ ADVANTAGE:

- Fully Integrated Cargo & Personnel Aerial Release Planning
- Full 2D / 3D GIS Map Overlay
- Real-Time On-Board Health Status Monitoring
- Multi-Lingual Support
- Mission Simulation & Playback
- Multi-Parachute Support
- Fully integrated Payload Manager
- Wireless GPS Signal Distributor
- Equipment integration in less than 5 minutes
- Fully Integrated Wind Sonde System
- Based on 802.11 Technology



**MULTI-MISSION
MANAGER**



SHERPA™/JPADS



ROUNDS

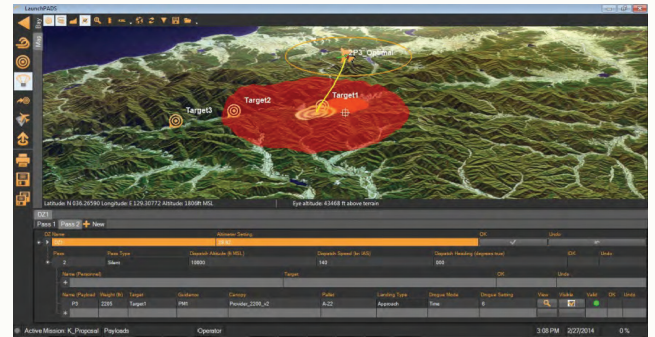


PERSONNEL



LaunchPADS multi-mission manager

- Aerial release planning for Sherpa™ /JPADS guided parachute systems
- Full 2D/3D GIS Map Overlay
- Real-Time On-Board Sherpa™ Health/Status Monitor
- Multi-Lingual Support
- Aircraft Payload Manager
- Mission Simulation and Playback
- 802.11 Wireless / Wireline Mission Planning
- Interface to online weather forecasting systems
- Supports standard map imagery, scenery, and DTED



Multi-parachute support

- Conventional HALO rounds (time delay or selectable Baro pressure altitude)
- Low/High Velocity Rounds (G12, G11, LCLV, LCHV, LCLA)
- Personnel Parachutes
- Customer specific parachutes (Optional)

A Fully Integrated Aerial Delivery Solution

COMPATIBLE WITH:

Sherpa

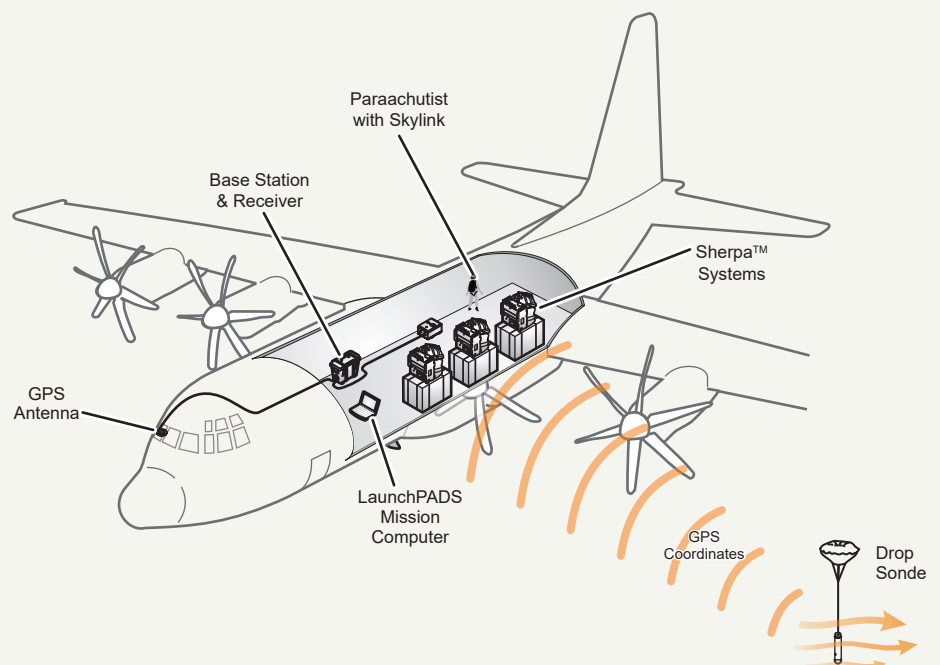
Mission plan and Task Sherpa Systems Prior to Deployment

Skylink

Create mixed missions including cargo and/or parachutists

Drop Sonde

Displays sonde data and provides the user interface to the Drop Sonde system



Drop Sonde System in a cargo aircraft

